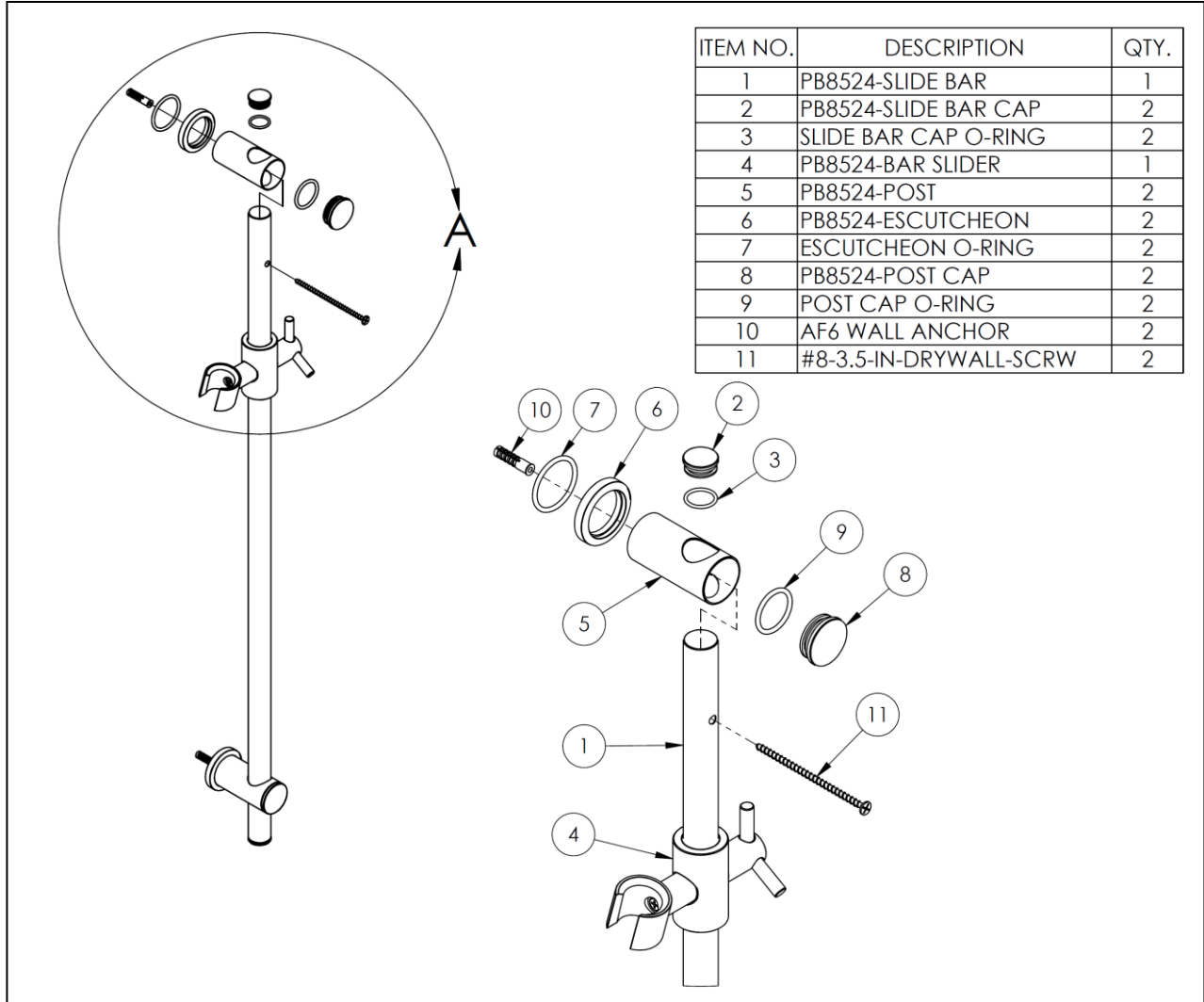


NOTE:

- Use plywood backing in walls whenever possible, to ensure security to wall.
- Be sure that distance between centers of posts is correct before drilling into wall.
- Do all painting, staining or wall papering before accessory installation.



Adjustment and Installation Notes:

1. Determine where on the wall the positioning bar is to be installed.
2. Using the holes on the Slide Bar (1) as reference, mark the center of the holes on the wall.
3. If using supplied Wall Anchor (10), drill a ¼" hole at each marked position (1 ¾" min. hole depth).
4. Insert the Wall Anchors (10) into holes until flush with the wall (a hammer may be needed to lightly tap the Wall Anchors flush).
5. Remove the Post Cap (8) from the Post Assembly (5-7).
6. Insert the Slide Bar (1) into the Post (5) until the hole on the Slide Bar (1) is visible from the front of the Post (5).

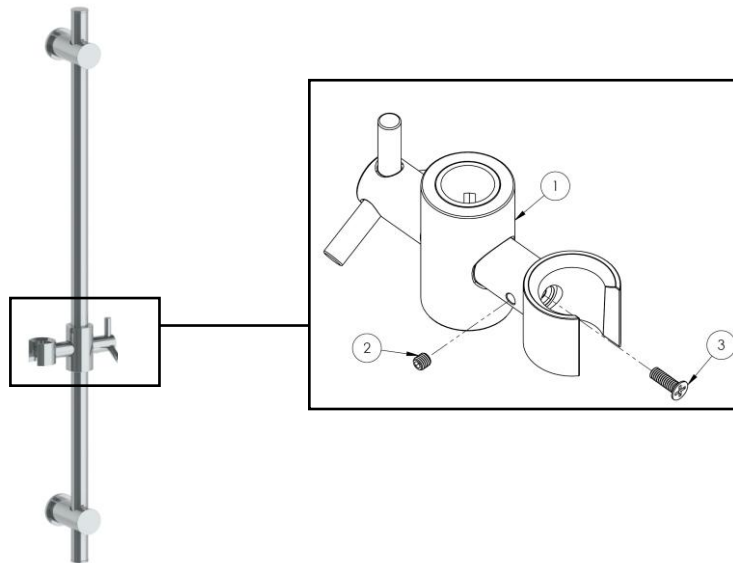
- **Note:** The holes at each end of the Slide bar (1) consist of two different size holes. The larger hole should face away from the wall.
7. Insert the supplied Drywall Screw (11) through the front of the Post (5) and through the Slide Bar (1). Screw should rest inside the Slide Bar (1).
 8. Secure the Post Assembly (5-7) to the wall with the Drywall Screw (11).
 9. Attach the Post Cap (8) back on to the Post Assembly (5-7).
 10. With the Bar Slider (4) on the Slide Bar (1), repeat for the second Post Assembly (5-7, 8-9).

Adjustment of Positioning Bar Slider:

To adjust the stiffness of the Positioning Bar Slider (1), you will need a 5/64" (or 2 mm) allen wrench.

To increase the stiffness of the Positioning Bar Slider (1), turn the set screw (2) CCW and then turn the support screw (3) CW to tighten. Once at the desired stiffness turn the set screw (2) CW until tight.

To decrease the stiffness of the Positioning Bar Slider (1), turn the set screw (2) CW and then turn the support screw (3) CCW to loosen. Once at the desired stiffness turn the set screw (2) CW until tight.



IMPORTANT INSTALLATION INFORMATION

- DO NOT USE PLUMBER'S PUTTY ON ANY OF THE BRASS COMPONENTS
 - This will cause the finish to tarnish and void the warranty. A non-corrosive Alkoxy Silicone is recommended.

To help ensure the beauty of brass accessories, never install an item until construction is almost completed and after:

- Workmen have finished treating nearby tile or marble with acid or chemicals.
- The air conditioning or heat has been turned on.
- The room has been painted or stained.

For technical support or warranty information, please call 718-257-2800